

# GOODMAN PARK ICE RINK LIGHTING IMPROVEMENTS

CONTRACT NUMBER 7949  
MUNIS NO. 17434-51-130

City of Madison  
Department of Public Works  
PARKS DIVISION

City-County Building, Suite 104  
210 Martin Luther King, Jr. Blvd.  
PO Box 2987  
Madison, WI 53701-2987

play  
**MADISON  
PARKS**



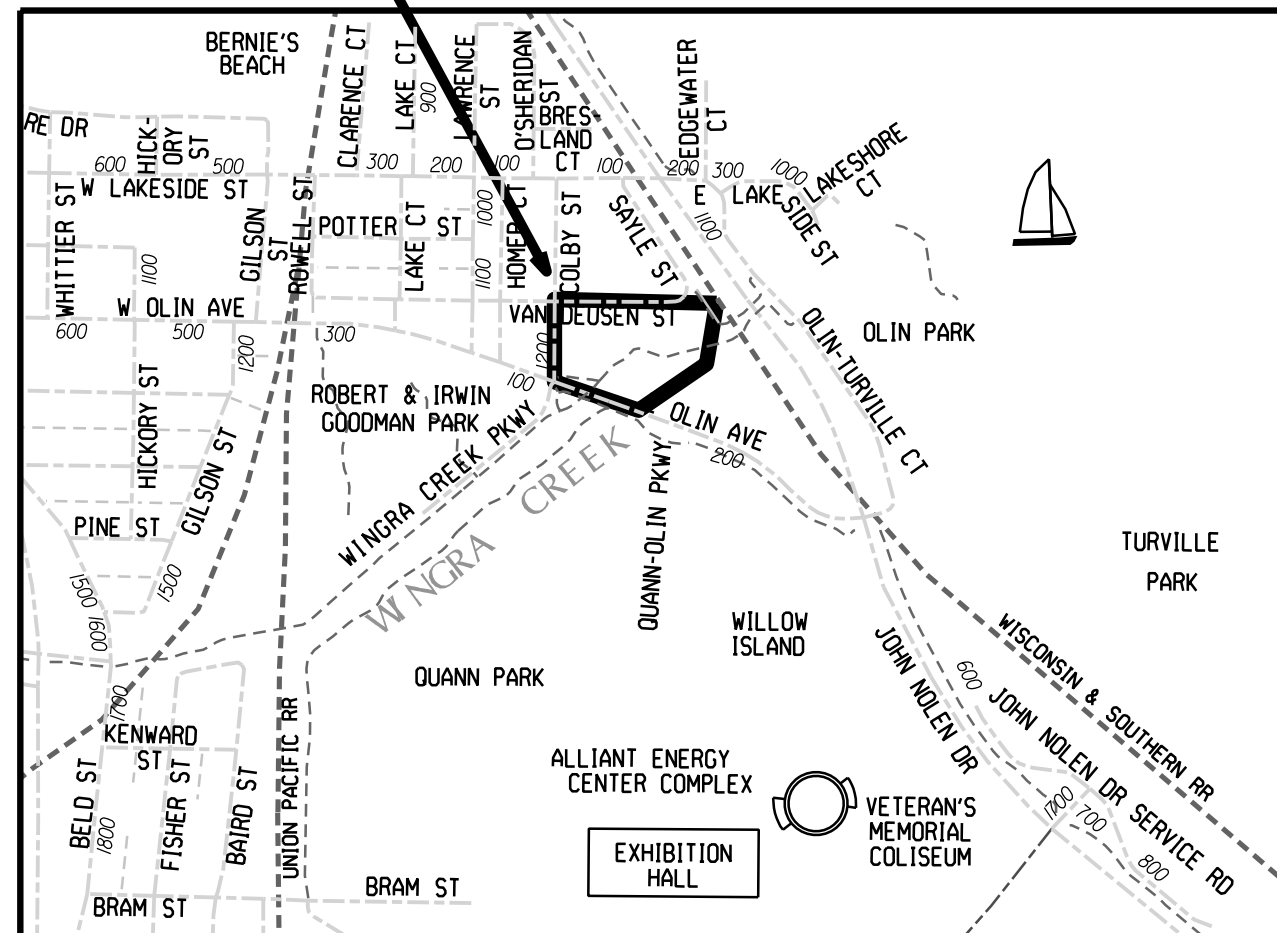
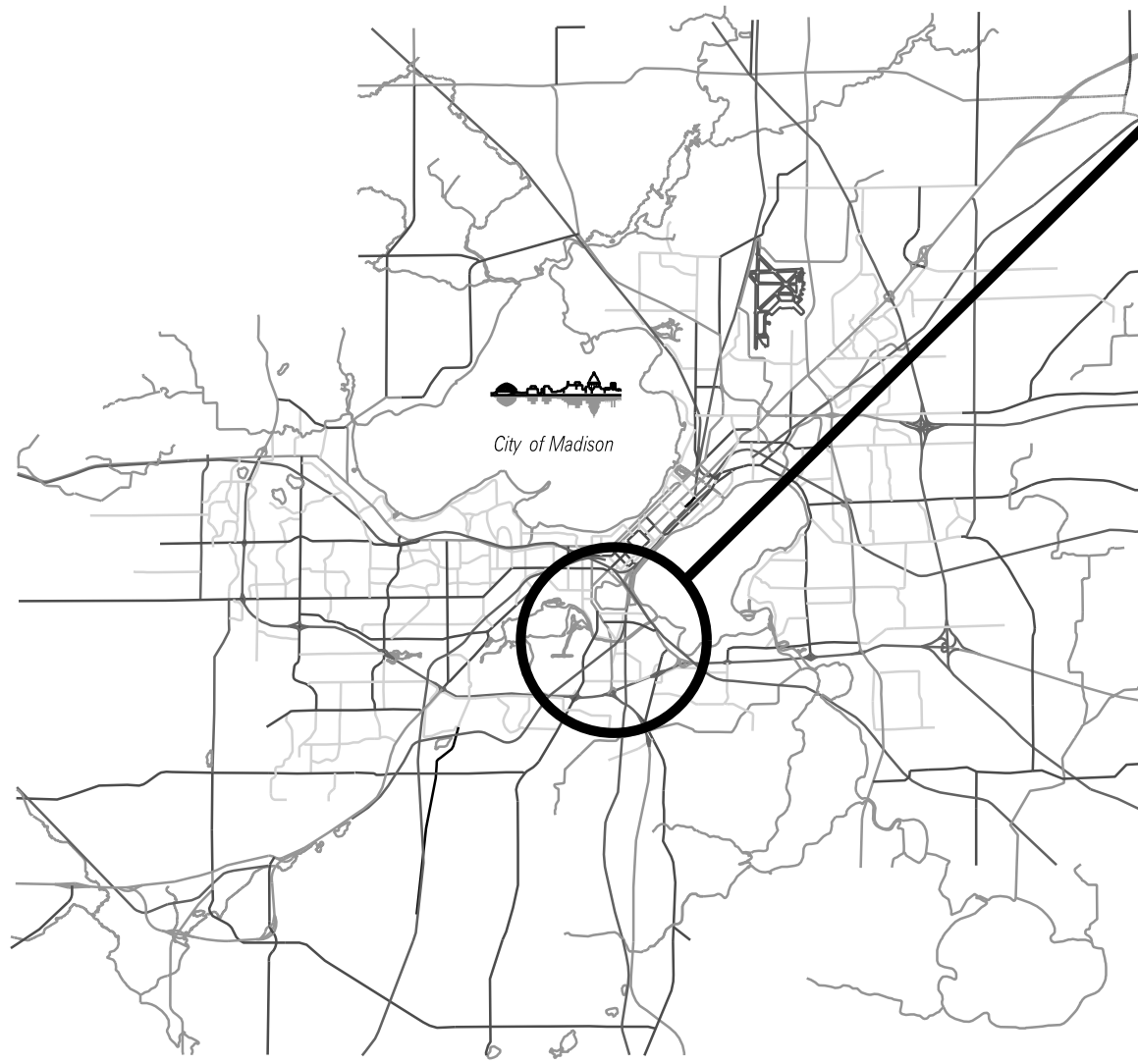
## INDEX OF SHEETS

SHEET NO.	TITLE
1	
P1	SITE ACCESS AND EROSION CONTROL
E1-E2	ELECTRICAL PLAN

## PROJECT LOCATION

CONVENTIONAL EXISTING UTILITY SIGNS  
FIELD VERIFY ALL UTILITY LOCATIONS

GAS	— G —
STORM SEWER	— ST —
SANITARY SEWER	— SAN —
WATER	— W —
OVERHEAD ELECTRIC	— OH —
POWER POLE	⊥



PROJECT:

**GOODMAN PARK ICE  
RINK LIGHTING  
IMPROVEMENTS**

**GOODMAN PARK  
ICE RINK  
37 VAN DEUSEN ST  
MADISON, WI 53703**

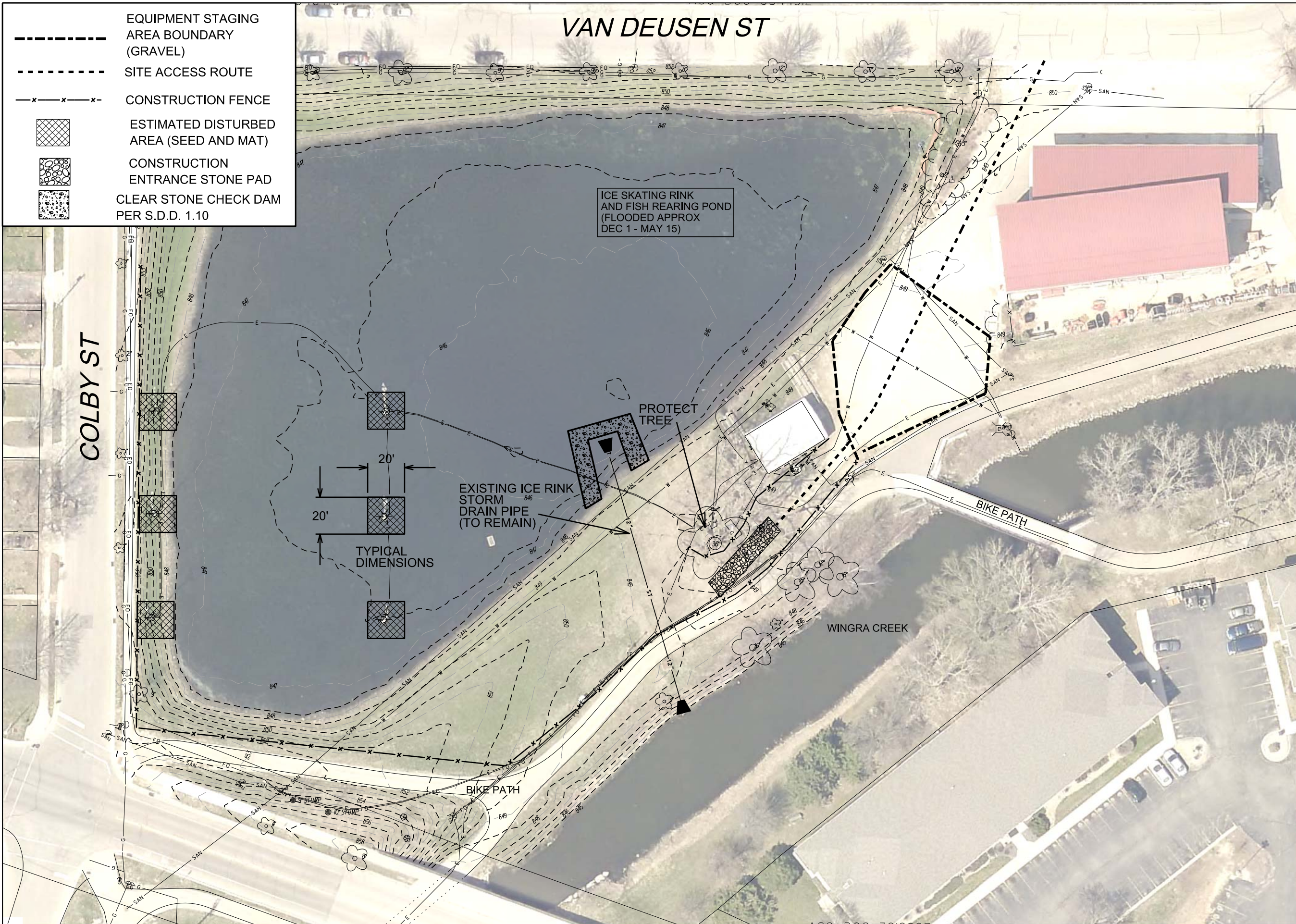
Although every effort has been made in preparing these plans and checking them for accuracy, the contractor and subcontractors must check all details and dimensions of their trade and be responsible for the same.

ITEM DATE  
Drawn by: CCS 3-3-17

Revised by:

SHEET TITLE:  
**TITLE**

SHEET NUMBER:  
**1**

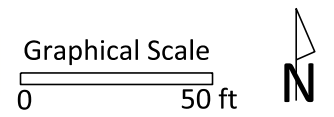


- EQUIPMENT STAGING AREA BOUNDARY (GRAVEL)
- - - - - SITE ACCESS ROUTE
- x - x - x - CONSTRUCTION FENCE
- [Cross-hatch pattern] ESTIMATED DISTURBED AREA (SEED AND MAT)
- [Circular pattern] CONSTRUCTION ENTRANCE STONE PAD
- [Dotted pattern] CLEAR STONE CHECK DAM PER S.D.D. 1.10

**City of Madison**  
 Department of Public Works  
**PARKS DIVISION**

City-County Building, Suite 104  
 210 Martin Luther King, Jr. Blvd.  
 PO Box 2987  
 Madison, WI 53701-2987

*play*  
**MADISON PARKS**



PROJECT:  
**GOODMAN PARK ICE RINK LIGHTING IMPROVEMENTS**

**GOODMAN PARK ICE RINK**  
**37 VAN DEUSEN ST**  
**MADISON, WI 53703**

Although every effort has been made in preparing these plans and checking them for accuracy, the contractor and subcontractors must check all details and dimensions of their trade and be responsible for the same.

ITEM	DATE
Drawn by: CCS	12-2-2016
Approved by:	

SHEET TITLE:  
**SITE ACCESS AND EROSION CONTROL**

SHEET NUMBER:  
**P-1**



PROJECT:

*GOODMAN  
PARK ICE RINK  
LIGHTING*

*GOODMAN PARK  
37 VAN DEUSEN ST  
MADISON, WI 53703*

Although every effort has been made in preparing these plans and checking them for accuracy, the contractor and subcontractors must check all details and dimensions of their trade and be responsible for the same.

ITEM	DATE
Drawn by: CCS	1-26-2017

PUBLIC WORKS PROJECT #:  
**7949**

SHEET TITLE:  
**ELECTRICAL PLAN**

SHEET NUMBER:  
**E-2**

